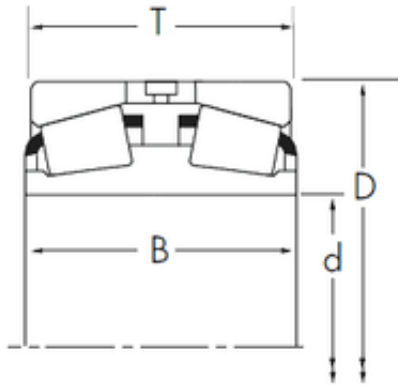




## New energy Bearing Manufacturing Co.,...



42,862 mm x 85 mm x 52,375 mm Timken  
358D/354A tapered roller bearings

Bearing No. 358D/354A

Size	42.862x85x50.262 mm
Bore Diameter	42,862 mm
Outer Diameter	85 mm
Width	50,262 mm
d	42,862 mm
D	85 mm
T	50,262 mm
B	52,375 mm
R	1,5 mm
r	1,3 mm

358D/354A Bearing 2D drawings and 3D CAD models