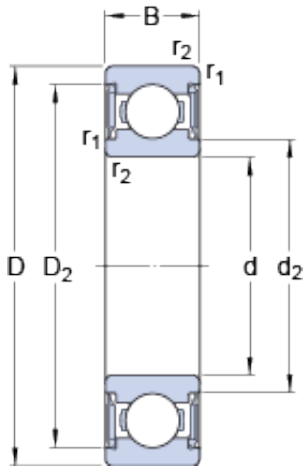




New energy Bearing Manufacturing Co.,...



17 mm x 26 mm x 5 mm SKF W 61803-2RS1
deep groove ball bearings

Bearing No. W 61803-2RS1

W 61803-2RS1 Bearing 2D drawings and 3D CAD models

Size	26x17x5 mm
Bore Diameter	26 mm
Outer Diameter	17 mm
Width	5 mm
d	17 mm
D	26 mm
B	5 mm
d ₂	18.8 mm
D ₂	24.15 mm
r _{1,2} - min.	0.3 mm
d _a - min.	18.5 mm
d _a - max.	18.5 mm
D _a - max.	24.5 mm
r _a - max.	0.3 mm
Basic dynamic load rating - C	1.8 kN
Basic static load rating - C ₀	1.3 kN
Fatigue load limit - P _u	0.054 kN
Limiting speed	16000 r/min
Calculation factor - k _r	0.02
Calculation factor - f ₀	14.1
Category	Single Row Ball Bearings
Inventory	0.0
Manufacturer Name	SKF
Minimum Buy Quantity	N/A



New energy Bearing Manufacturing Co.,...

Weight / Kilogram	0.008
EAN	7316572541333
Product Group	B00308
Enclosure	2 Seals
Precision Class	ABEC 1 ISO P0
Maximum Capacity / Filling Slot	No
Rolling Element	Ball Bearing
Snap Ring	No
Internal Special Features	No
Cage Material	Stainless Steel
Enclosure Type	Contact Seal
Internal Clearance	C0-Medium
Inch - Metric	Metric
Long Description	17MM Bore; 26MM Outside Diameter; 5MM Outer Race Width; 2 Seals; Ball Bearing; ABEC 1 ISO P0; No Filling Slot; No Snap Ring; No Internal Special Features; C0-Medium Internal Clearance; Stainless Ste
Other Features	Deep Groove NBR Seal
Category	Single Row Ball Bearing
UNSPSC	31171504
Harmonized Tariff Code	8482.10.50.68
Noun	Bearing
Keyword String	Ball
Manufacturer URL	http://www.skf.com
Manufacturer Item Number	W 61803-2RS1
Weight / LBS	0.0176
Outer Race Width	0.197 Inch 5 Millimeter
Outside Diameter	1.024 Inch 26 Millimeter
Inner Race Width	0 Inch 0 Millimeter



New energy Bearing Manufacturing Co.,...

Bore	0.669 Inch 17 Millimeter
d_2	18.8 mm
D_2	24.15 mm
$r_{1,2}$ min.	0.3 mm
d_a min.	18.5 mm
d_a max.	18.5 mm
D_a max.	24.5 mm
r_a max.	0.3 mm
Basic dynamic load rating C	1.78 kN
Basic static load rating C_0	1.27 kN
Fatigue load limit P_u	0.054 kN
Calculation factor k_r	0.02
Calculation factor f_0	14.1
Mass bearing	0.008 kg